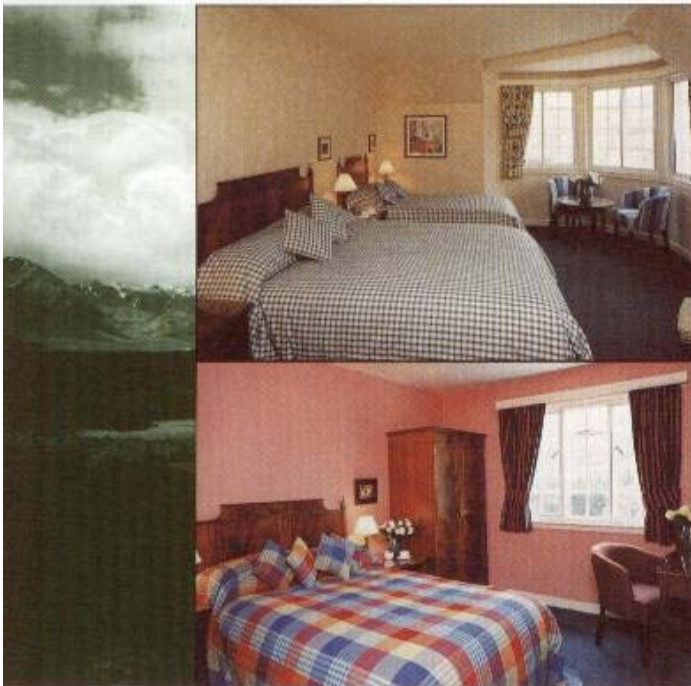
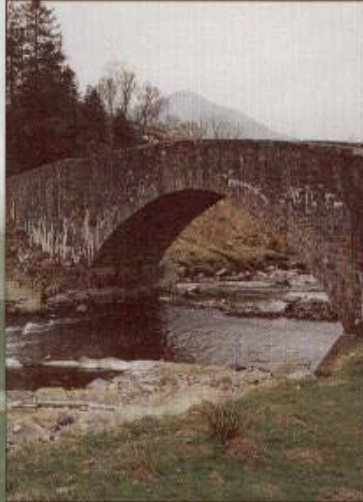


BRIDGE of ORCHY  
HOTEL

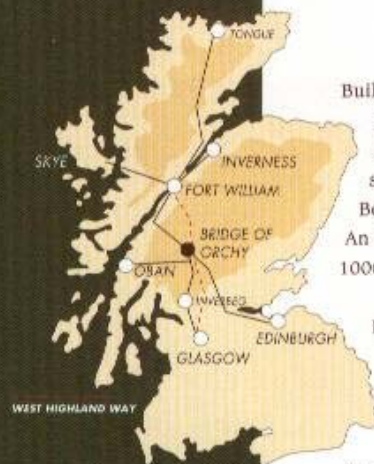
heart of the Highlands



W  
Welcome Host



Each room has its own character



Built by the River Orchy, on the A82, the Bridge of Orchy Hotel has spectacular views of Beinn Dorain and Beinn An Dothaidh (both over 1000 metres high).

From the Hotel it is only a 45 minute drive to Oban and the same distance North to Fort William and the Nevis range.

*The Bridge of Orchy Hotel is one of a group of three which includes the Inverbeg Inn by Loch Lomond and the Tongue Hotel on the north coast. All three hotels offer the same high standards but retain a unique character of their own.*

The facilities for sport and recreation in the area are superb ...

... Salmon and trout fishing, skiing at the White Corries in Glencoe, canoeing and white water rafting on the River Orchy, plus an endless list of highland glens, castles and historic sites.



*The Bridge of Orchy Hotel sits by the road to Skye, in spectacular scenery above the Orchy River, looking North to Glencoe and East to Rannoch Moor. Truly the heart of the Highlands.*



The Hotel is an ideal place to base any holiday - walking, climbing, fishing, skiing and water sports. And, if you are touring, the location is a convenient point for sightseeing trails.

As one of the staging posts on the famous West Highland Way, and close to the West Highland Railway Line, the Bridge of Orchy Hotel is the perfect place to explore this area of the Highlands. Our friendly staff assure a comfortable stay, with traditional Scottish hospitality.

A fine selection of Malt Whisky and Real Ales can be sampled in the Caley Bar, where a varied menu of quality Bar Meals is available.

The Dining Room



Cask Ales and fine Malt Whisky in the Caley bar



## Bridge of Orchy Hotel



*We are open all year round, please call early to ensure your booking.*

*Bridge of Orchy, Argyll, PA36 4AD, Scotland. Tel: 01838 400208 Fax: 01838 400313*

*If you are travelling through the Scottish Highlands we would recommend these hotels, both in spectacular locations, with an excellent level of comfort, service and fine food.*

### Inverbeg Inn

Inverbeg Inn, Luss, Loch Lomond,  
Dumbartonshire, G83 8PD  
Tel: 01436 860678 Fax: 01436 860686



*One of Scotland's most romantic, and accessible, places. The food alone will make your stay worthwhile.*

### Tongue Hotel

Tongue, Sutherland, Scotland.  
Tel: 01847 611206 Fax: 01847 611345



*There's a real character to this former Victorian hunting lodge, ideally placed for unspoilt game fishing. It's very likely to be one of the places you'll want to return to again and again.*



[www.scottish-selection.co.uk](http://www.scottish-selection.co.uk)

*All details are correct at time of going to press and may be subject to change.*